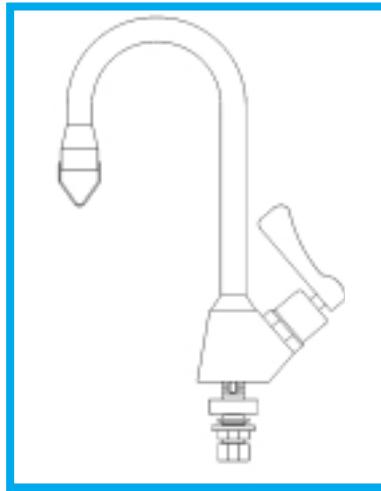


Pantry Faucets

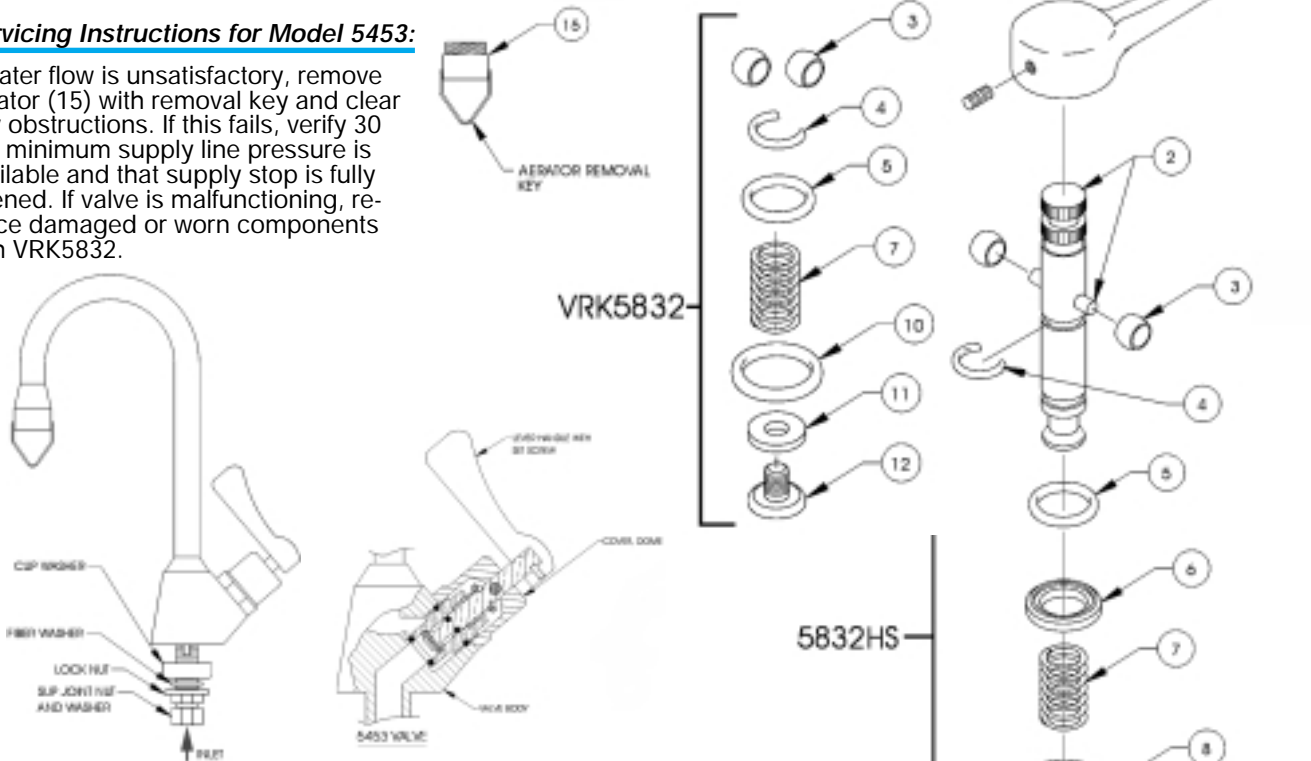
Model 5453:

Polished chrome plated brass with 3/8" gooseneck locked to body. Includes self-closing lever handle valve with renewable seat; integral basin shank; 1/2" O.D. slip joint supply. Equipped with a vandal-resistant aerator. Pins in base prevent turning of fixture. This pantry faucet exceeds the standards of the Safe Drinking Water Act and Lead Contamination Control Act. All components in the waterway contain less than 0.1% lead. Dimensions: Center supply to center spout outlet, 6"; bottom of flange to extreme top of faucet, 10 11/16"; bottom of flange to spout outlet, 5 9/16"; length of shank, 2 1/4". This valve has been discontinued and only component parts are available.



Servicing Instructions for Model 5453:

If water flow is unsatisfactory, remove aerator (15) with removal key and clear any obstructions. If this fails, verify 30 PSI minimum supply line pressure is available and that supply stop is fully opened. If valve is malfunctioning, replace damaged or worn components with VRK5832.



Repl. Part #	Item #	Description
5832HS (Includes Items 1-12)		
0002689100	1	Handle Lever Blank with Set Screw
	2	Spindle with Pin
	6	Washer Retainer
	8	"O" Ring Cover
	9	Cover
VRK5832	3	Roller (2 req'd)
	4	Circlip
	5	"O" Ring Spindle
	7	Spring
	10	"O" Ring Seal
	11	Washer Neoprene
	12	Screw, Seat Washer Retainer
0000087770	15	Aerator with Key



Certified to NSF-61 Section 9

LEAD FREE