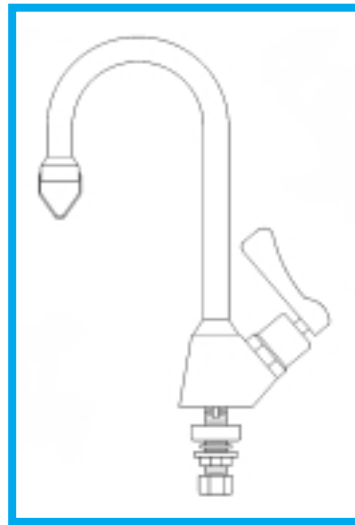


Pantry Faucets

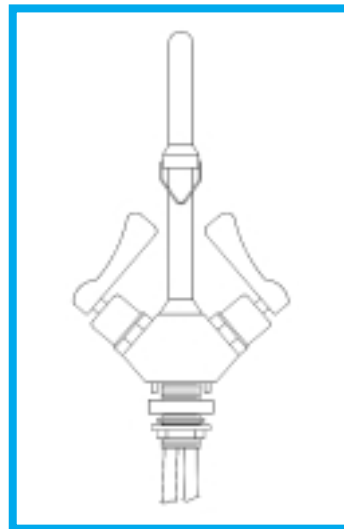
Model 5511

Polished chrome plated brass with 3/8" gooseneck locked to body. Includes compression type lever handle valve with renewable seat; integral basin shank; 1/2" O.D. slip joint supply. Equipped with a vandal-resistant aerator. Pins in base prevent turning of fixture. This pantry faucet exceeds the standards of the Safe Drinking Water Act and Lead Contamination Control Act. All components in the waterway contain less than 0.1% lead. Dimensions: Center supply to center spout outlet, 6"; bottom of flange to extreme top of faucet, 10 11/16"; bottom of flange to spout outlet, 5 9/16"; length of shank, 2 1/4". This valve has been discontinued and only component parts are available.



Model 5531

Polished chrome plated brass, hot and cold mixing faucet with 3/8" gooseneck locked to body. Includes two lever handle, compression type valves with renewable seat, integral basin shank; and two 3/8" O.D. inlet tubes. Equipped with a vandal-resistant aerator. Pins in base prevent turning of fixture supply. This pantry faucet exceeds the standards of the Safe Drinking Water Act and Lead Contamination Control Act. All components in the waterway contain less than 0.1% lead. Dimensions: Center supply to center spout outlet, 6"; bottom of flange to extreme top of faucet, 10 11/16"; bottom of flange to spout outlet, 5 3/16"; length of shank, 2 1/2". This valve has been discontinued and only component parts are available.

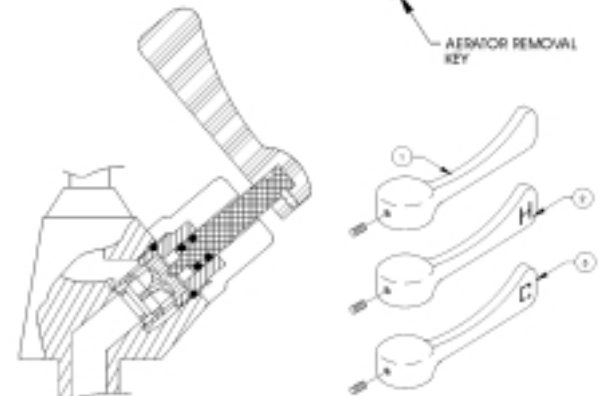
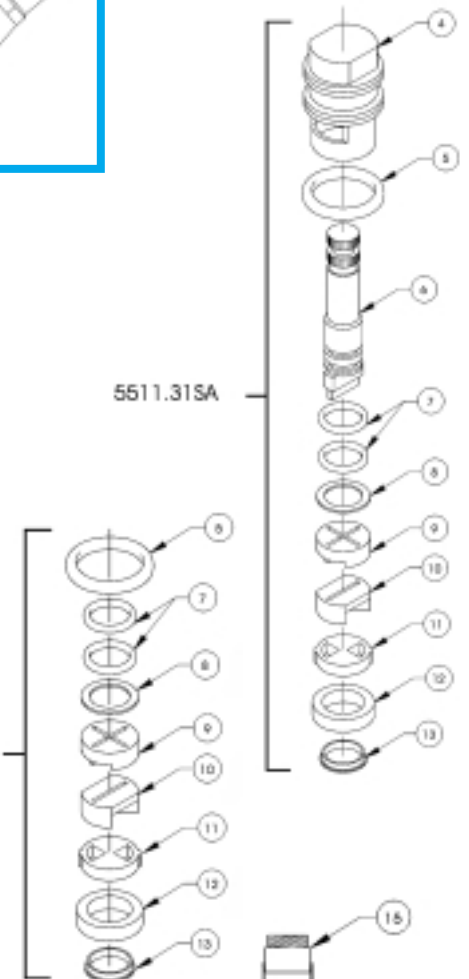


VRK5511.31

Servicing Instructions for Models 5511

and 5531:

If water flow is unsatisfactory, remove aerator (15) with removal key and clear any obstructions. If this fails, verify 30 PSI minimum supply line pressure is available and that supply stop is fully opened. If valve is malfunctioning, replace damaged or worn components with the VRK5511.31.



Repl. Part #	Item #	Description
0002689100	1	Handle Lever Blank with Set Screw
0002689211	2	Handle Lever Hot 5531 with Set Screw
0002689152	3	Handle Lever Cold 5531 with Set Screw
5511.31SA (Includes Items 4-13)	4	Cover
	6	Spindle
VRK5511.31	5	"O" Ring Cover
	7	"O" Ring Spindle (2 req'd)
	8	Washer P.T.F.C.
	9	Thrust Plate
	10	Upper Disc C.D.
	11	Lower Disc C.D.
	12	Sealing Washer
	13	Support Ring
0000087770	15	Aerator with Key



Certified to NSF-61 Section 9

LEAD **Pb** FREE