

## Model 5830LF

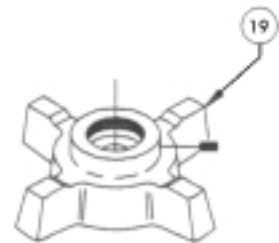
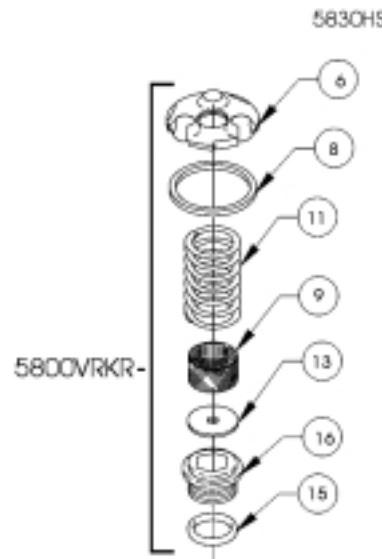
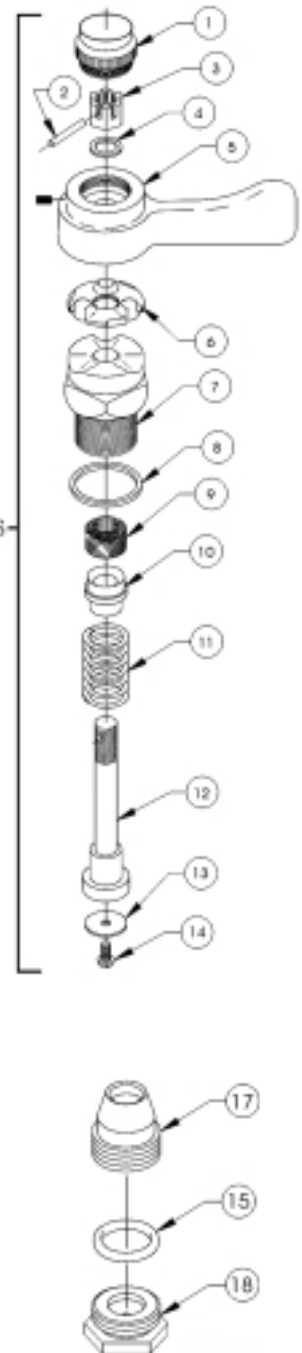
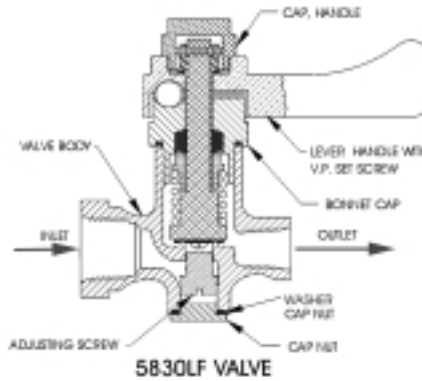
Polished chrome plated, lead free forged brass self-closing lever handle valve with screwdriver adjustment stream control. 1/2" NPT(F) inlet by 1/4" NPT(F) outlet. This valve exceeds the standards of the Safe Drinking Water Act and Lead Contamination Control Act. All components in the waterway contain less than 0.1% lead.



### Servicing Instructions for Model 5830LF.

To repair this valve, order the 5800VRKR. Order the 5830HS to replace the handle and stem assembly. To regulate the flow, remove plug at base of valve, unscrew adjusting screw a few turns and flush valve. Adjust flow to desired height with adjusting screw, and replace plug. Turn screw counter clockwise to increase stream height and clockwise to lower. If stream continues to be unsatisfactory repeat above procedure thoroughly flushing valve to remove any sediment.

**Note:** The parts used on the 5830LF valve will fit the older 5830 and 5840 valves.



Repl. Part #	Item #	Description
5830HS	1	Cap Handle PCP
	2	Pin-Lock
	3	Nut, Thrust
	4	Washer, Thrust
0002710721.1	5	Lever Handle with Set Screw
5800VRKR	6	Retainer Ball
	7	Bonnet Cap
	8	Washer Bonnet
	9	Packing Felt
	10	Gland Packing
	11	Spring
	12	Stem
	13	Washer Seat
0006863494.3	15	Washer, Cap Nut
	16	Seat, Renew
0005181110.1	17	Adjusting Screw
0004607511.1	18	Cap Nut
0002708758	19	Cross Handle with Set Screw

