

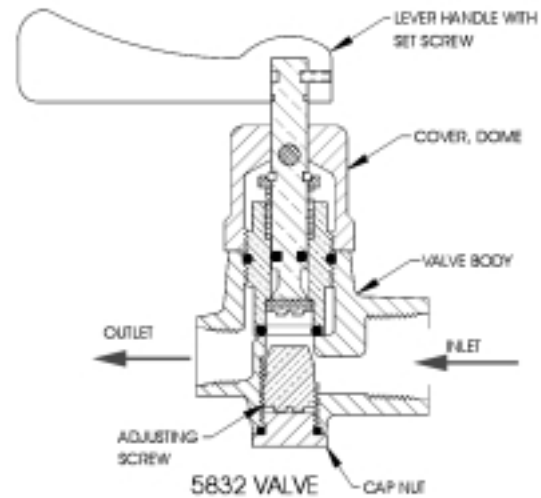
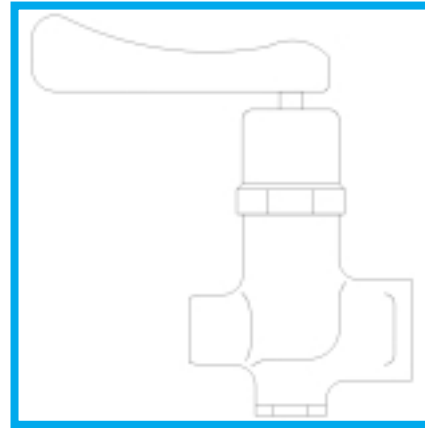
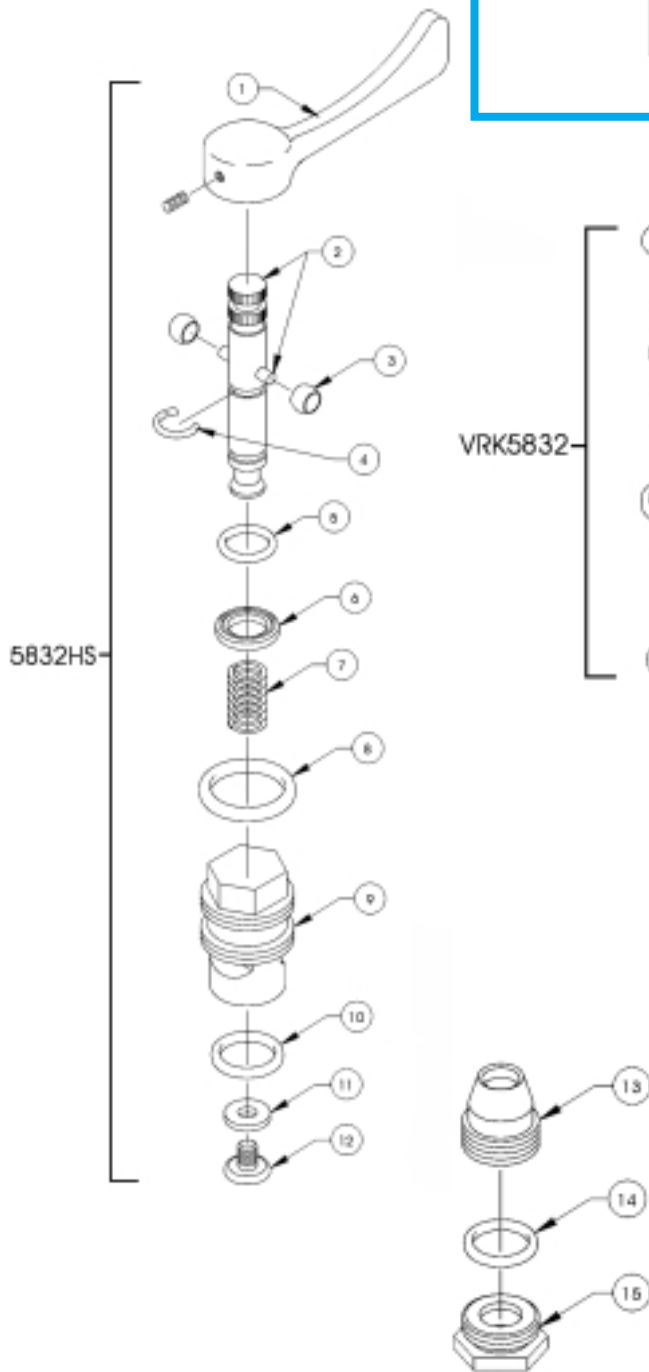
# Valves

## Model 5832

Polish chrome plated, lead free forged brass lever handle, self closing valve. Features screwdriver adjustment stream control. 1/2" NPT(F) inlet by 1/4" NPT(F) outlet. This valve exceeds the standards of the Safe Drinking Water Act and Lead Contamination Control Act. All components in the waterway contain less than 0.1% lead. This valve has been discontinued and only component parts are available. This valve has been replaced by model 5830LF.

### Servicing Instructions for Model 5832:

If stream height of water is unsatisfactory, remove cap nut (15) and "O" ring (14) and adjust stream by turning slotted adjusting screw (13): clockwise to lower or turn off, counter clockwise to raise. If this fails to improve stream, or if valve is malfunctioning, replace damaged or worn components with the VRK5832.



Repl. Part #	Item #	Description
5832HS (Includes items 1-12)		
0002689100	1	Handle Lever Blank with Set Screw
	2	Spindle with Pin
VRK5832 (Includes items 3-8, 10-12 and 14)	3	Roller (2 req'd)
	4	Circlip
	5	"O" Ring Spindle
	6	Washer Retainer
	7	Spring
	8	"O" Ring Cover
	9	Cover
	10	"O" Ring Seal
	11	Washer Neoprene
	12	Screw, Seat Washer Retainer
0004694600	14	"O" Ring Cap Nut
0005183100	13	Screw Adjusting
0003869100	15	Nut, Cap

LEAD FREE

