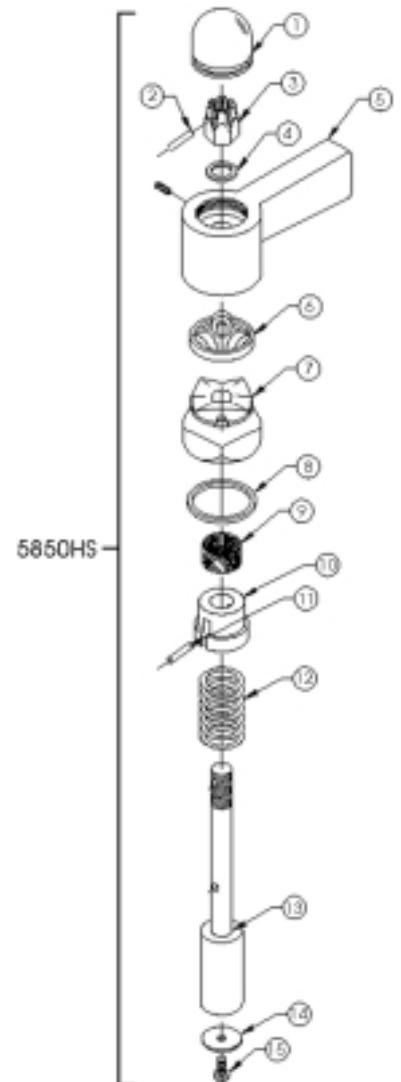
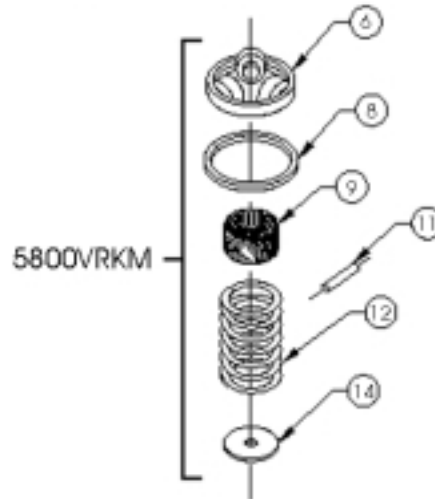
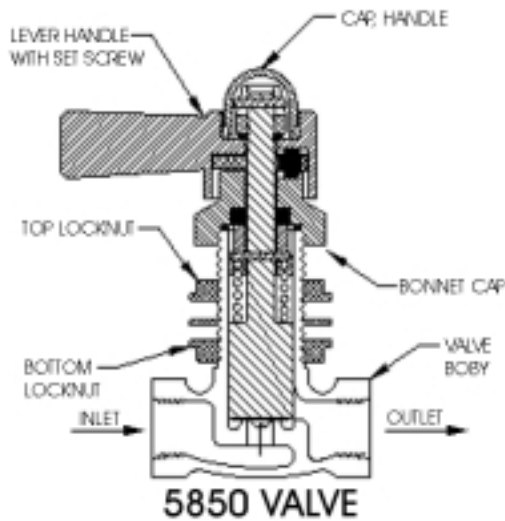
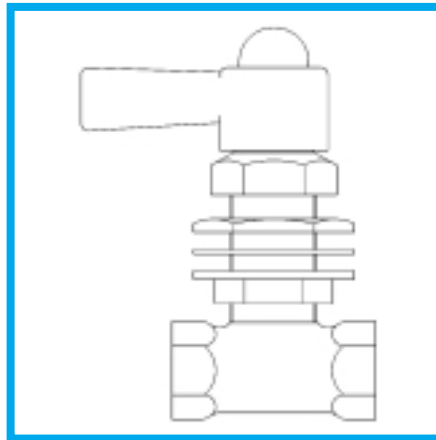


Model 5850

Polished chrome plated, panel mounted, self-closing, lever handle valve with rough brass body and vandal resistant handle. Dimensions: wall thickness maximum, 1"; size of hole required, 1" diameter. $\frac{3}{8}$ " NPT(F) inlet and outlet. This valve has been discontinued and only component parts are available. This valve has been replaced by 5851LF.

Service Instructions for Model 5850:

To repair this valve order the 5800VRKM or 5850HS handle and stem assembly. This valve has no stream adjustment.



Repl. Part #	Item #	Description
5850HS (Includes items 1-15)		
	1	Cap Handle PCP
	2	Pin-Lock
	3	Nut, Thrust
	4	Washer, Thrust
0002726479	5	Handle, Lever with Set Screw
	7	Bonnet Cap
	10	Retainer Spring
	13	Stem
	15	Screw Seat
5800VRKM	6	Retainer Roller
	8	Washer, Bonnet
	9	Packing Felt
	11	Pin, Stem
	12	Spring
	14	Washer Seat