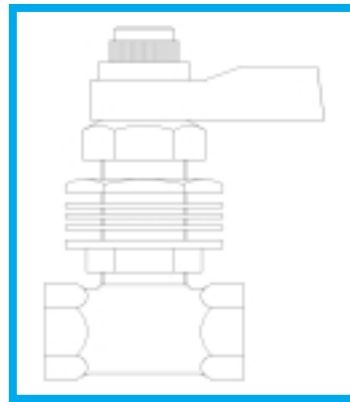


Model 5855

Polished chrome plated, panel mounted, self-closing, lever handle valve with rough brass body and vandal resistant handle. Dimensions: wall thickness maximum, 5/8"; size of hole required, 1 1/4" diameter. 3/8" NPT(F) inlet and outlet. This valve has been discontinued and only component parts are available. This valve has been replaced by 5851LF.



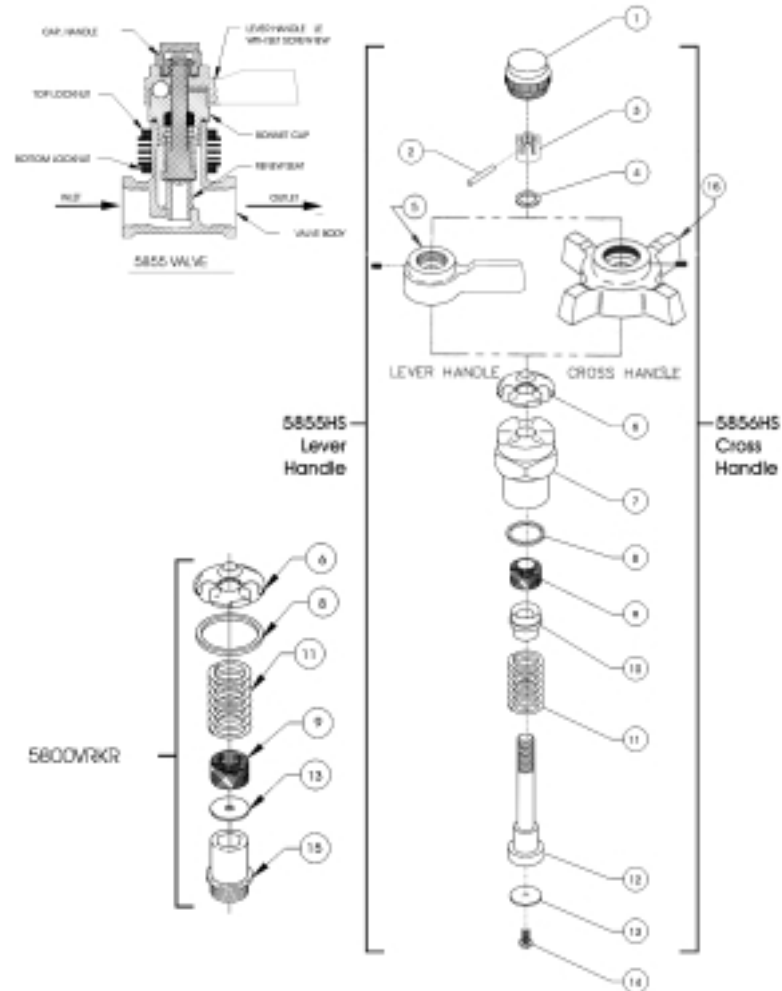
Model 5856

Similar to Model 5855 except with polished chrome plated 4 arm handle. This valve has been discontinued and only component parts are available. This valve has been replaced by 5851LFX.

Servicing Instructions for Models 5855 and 5856:

To repair these valves order the 5800VRKR or 5855HS. This valve has no stream adjustment.

Repl. Part #	Item #	Description
5855HS (Includes items 1-14)		
5856HS (Includes items 1-4, 6-14, and 16)		
	1	Cap, Handle PCP
	2	Pin-Lock
	3	Nut, Thrust
	4	Washer, Thrust
0002710721.1	5	Handle, Lever with Set Screw
	6	Retainer, Ball
	7	Bonnet Cap
	8	Washer, Bonnet
	9	Packing, Felt
	10	Gland, Packing
	11	Spring
	12	Stem
	13	Washer, Seat
	14	Screw, Seat Washer
0002708758	16	Handle, Cross with Set Screw
5800VRKR	6	Retainer, Ball
	8	Washer, Bonnet
	9	Packing Felt
	11	Spring
	13	Washer, Seat
	15	Seat, Renew



Model 5867

Lead free plastic pressure regulator currently used on all Haws "Hands-Off" sensor operated drinking fountains. This valve exceeds the standards of the Safe Drinking Water Act and Lead Contamination Control Act. All components in the waterway contain less than 0.1% lead.

Servicing Instructions for Model 5867:

If stream height of water is unsatisfactory, flush regulator thoroughly to remove all debris. Then adjust stream by first loosening locknut and then turn adjusting screw clockwise to raise, counter clockwise to lower. Tighten lock nut when complete. If regulator continues to malfunction, replace with complete regulator. Individual replacement parts are not available.

