

Freeze Resistant Valves

Model 6518FR

Freeze-resistant valve for single bubbler freeze-resistant pedestal drinking fountains. Reliable, fully engineered system with pneumatic operated valve installed below frost line to drain water to non-freezing depth allowing fountain to function year-round. Assembly can be lifted to surface and lowered back into casing for easy maintenance without disturbing the fountain. Automatic stream regulation with .4 GPM flow control assembly. Five cubic feet of porous gravel fill is required for water left in supply line between valve and bubbler (when valve is in off position) to drain through check valve into ground. 1/2" NPT(M) inlet. This valve exceeds the standards of the Safe Drinking Water Act and Lead Contamination Control Act. All components in the waterway contain less than 0.1% lead.

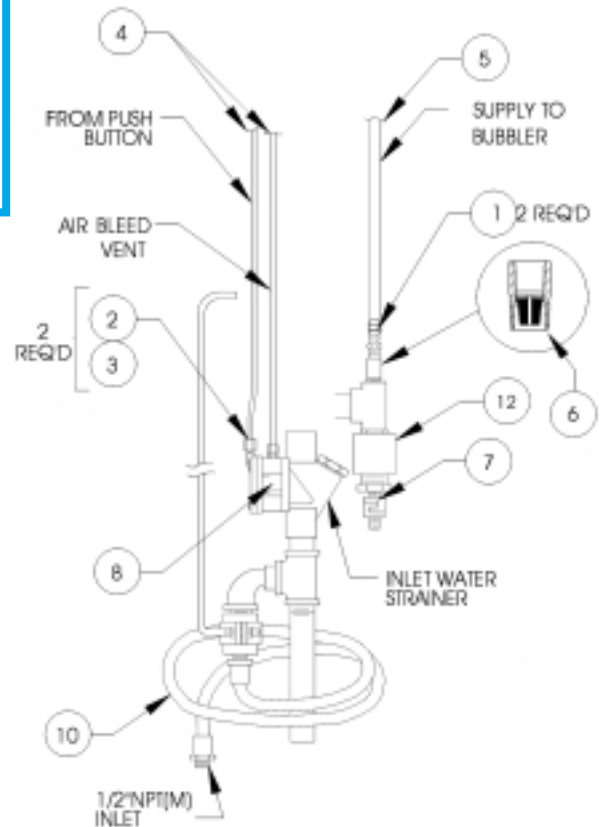


Servicing Instructions for Model 6518FR:

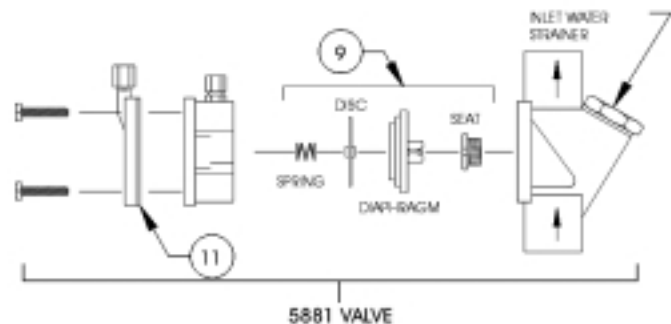
For fountains with no flow or continuous flow, see the servicing instructions for the 5881 valve on page 27.

For fountains with insufficient or varied height bubbler flow :

- 1 Check that the shut-off valve is wide open.
- 2 Verify minimum 30 PSI supply pressure
- 3 Clean inlet water strainer screen located in the valve body.
- 4 Check for kinks in the bubbler supply tubing.
- 5 Clean rubber orifice in flow control located below frost line in bushing between barb fitting and valve.
- 6 Replace flow control.



| Repl. Part # | Item # | Description |
|--------------|--------|--|
| VRKFR1P | 1 | Clamp (2 req'd) |
| | 2 | Connector (2 req'd) |
| | 3 | Clamp Nut (2 req'd) |
| | 4 | Tubing 5/32" x 240", Vent, Push Button |
| | 5 | Tubing 3/8" x 260", Bubbler |
| 6388 | 6 | Flow Control Assembly |
| 5815 | 7 | Check Valve |
| 5881 | 8 | Valve Assembly |
| VRK2AV | 9 | Valve Repair Kit for 5881 |
| 0003097777 | 10 | Hose Assembly |
| VRK3AV | 11 | Cover Repair Kit for 5881 |
| 6518FRDV | 12 | Drain Valve Assembly |



Certified to NSF-61 Section 9

LEAD FREE

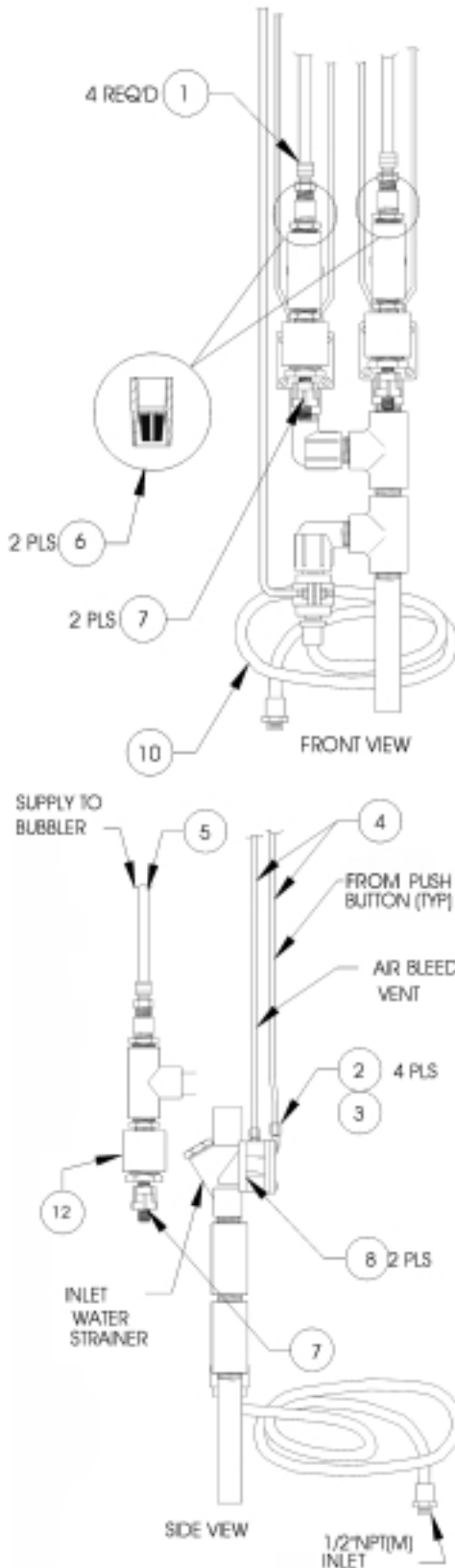
Freeze Resistant Valves

Model 6518.2FR

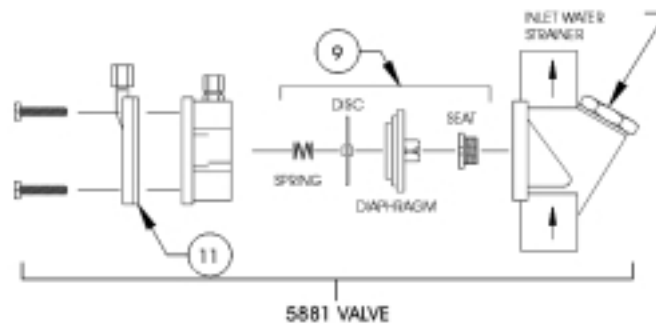
Freeze-resistant valve system for Haws dual height pedestal drinking fountains. Reliable, fully engineered system with two pneumatic operated valves installed below frost line to drain water to non-freezing depth allowing fountain to function year-round. Assembly can be lifted to surface and lowered back into casing for easy maintenance without disturbing the fountain. Automatic stream regulation with two .4 GPM flow control assemblies. Five cubic feet of porous gravel fill is required for water left in supply line between valve and bubbler when valve is in off position to drain through check valve into ground. 1/2" NPT(M). This valve exceeds the standards of the Safe Drinking Water Act and Lead Contamination Control Act. All components in the waterway contain less than 0.1% lead.

Servicing Instructions for Model 6518.2FR:

See servicing instructions for 6518FR on page 39.



| Repl. Part # | Item # | Description |
|--------------|--------|--|
| VRKFR2P | 1 | Clamp (4 req'd) |
| | 2 | Connector (4 req'd) |
| | 3 | Clamp Nut (4 req'd) |
| | 4 | Tubing 5/32" x 480", Vent, Push Button |
| | 5 | Tubing 3/8" x 260", Bubbler |
| 6388 | 6 | Flow Control Assembly (2 req'd) |
| 5815 | 7 | Check Valve (2 req'd) |
| 5881 | 8 | Valve Assembly (2 req'd) |
| VRK2AV | 9 | Valve Repair Kit for 5881 |
| 0003097777 | 10 | Hose Assembly |
| VRK3AV | 11 | Cover Repair Kit for 5881 |
| 6518FRDV | 12 | Drain Valve Assembly |



LEAD FREE



Certified to NSF-61 Section 9

Freeze Resistant Valves

Model 6521FR

Freeze-resistant valve system with push button activation for use on all Haws single bubbler wall mounted drinking fountains. Fully engineered system with pneumatic operated valve installed on the inside wall where temperature does not drop below 50° F. When valve goes to off position, water left in supply line between valve and bubbler drains back into waste inside cabinet. Allows fountain on outside to function year-round. Automatic stream regulation with .4 GPM flow control assembly. Included in cabinet is 1/2" NPT screwdriver stop and 1 1/4" NPT trap. Unit is efficient and easy to maintain. This valve exceeds the standards of the Safe Drinking Water Act and Lead Contamination Control Act. All components in the waterway contain less than 0.1% lead.



Servicing Instructions for Model 6521FR:

For fountains with no flow or continuous flow, see the servicing instructions for the 5881 valve on page 27.

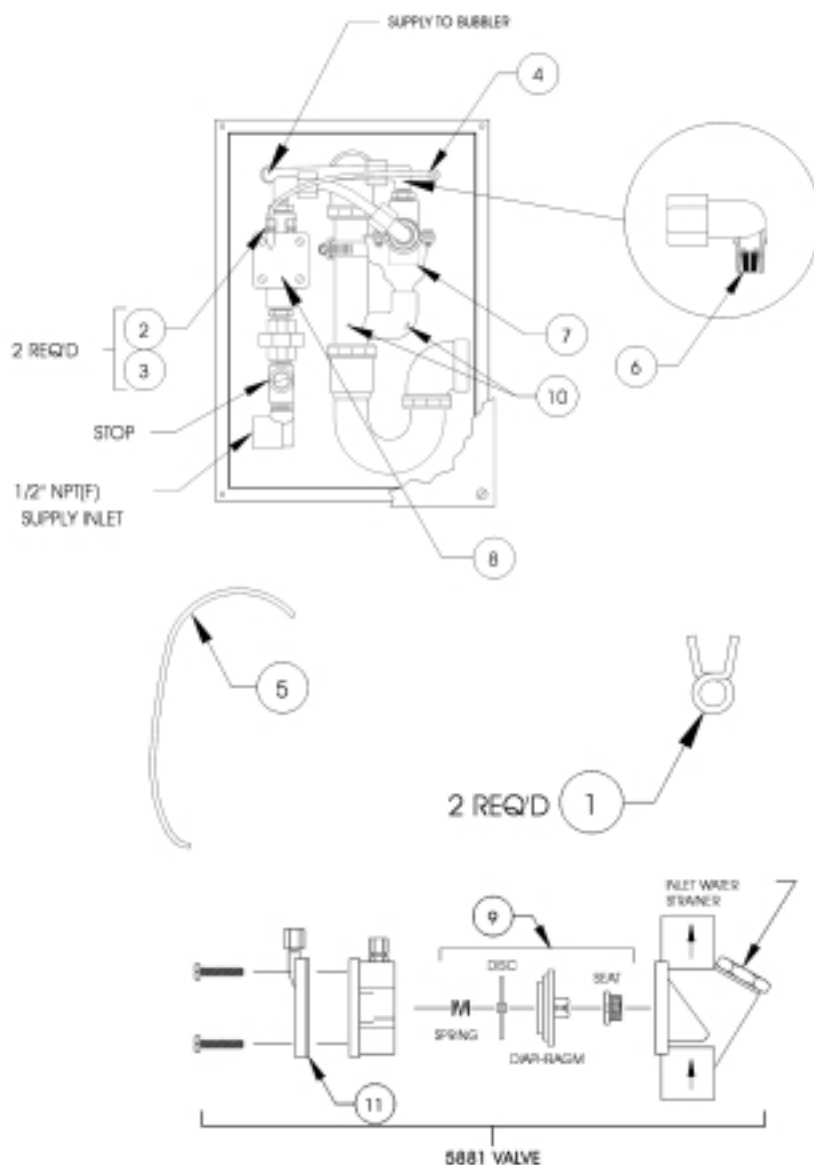
For fountains with insufficient bubbler flow or varied height of bubbler flow, see the servicing instructions for the 6518FR valve on page 39.

If water is leaking from the valve box in the wall:

- 1 Check tubing connections for leaks.
- 2 The drain back freeze protection feature drains through a 1" air gap surrounded by plastic funnel (splash guard). If drain is plugged, water will spill out of funnel. Unplug drain.

If fountain line from valve box to bubbler is blocked with ice:

- 1 Check slope of tubing to bubbler, it must slope down from bubbler to drain valve.
- 2 Clean or replace drain-back valve.



| Repl. Part # | Item # | Description |
|--------------|--------|--|
| VRKFR1P | 1 | Clamp (2 req'd) |
| | 2 | Connector (2 req'd) |
| | 3 | Clamp Nut (2 req'd) |
| | 4 | Tubing 5/32" x 240", Vent, Push Button |
| | 5 | Tubing 3/8" x 260", Bubbler |
| 6381 | 6 | Flow Control Assembly |
| 0002061720 | 7 | Drain Valve |
| 5881 | 8 | Valve Assembly |
| VRK2AV | 9 | Valve Repair Kit for 5881 |
| 0005760300.2 | 10 | Drain Waste Assembly |
| VRK3AV | 11 | Cover Repair Kit for 5881 |



Certified to NSF-61 Section 9

LEAD ~~Pb~~ FREE

Freeze Resistant Valves



Model 6522FR

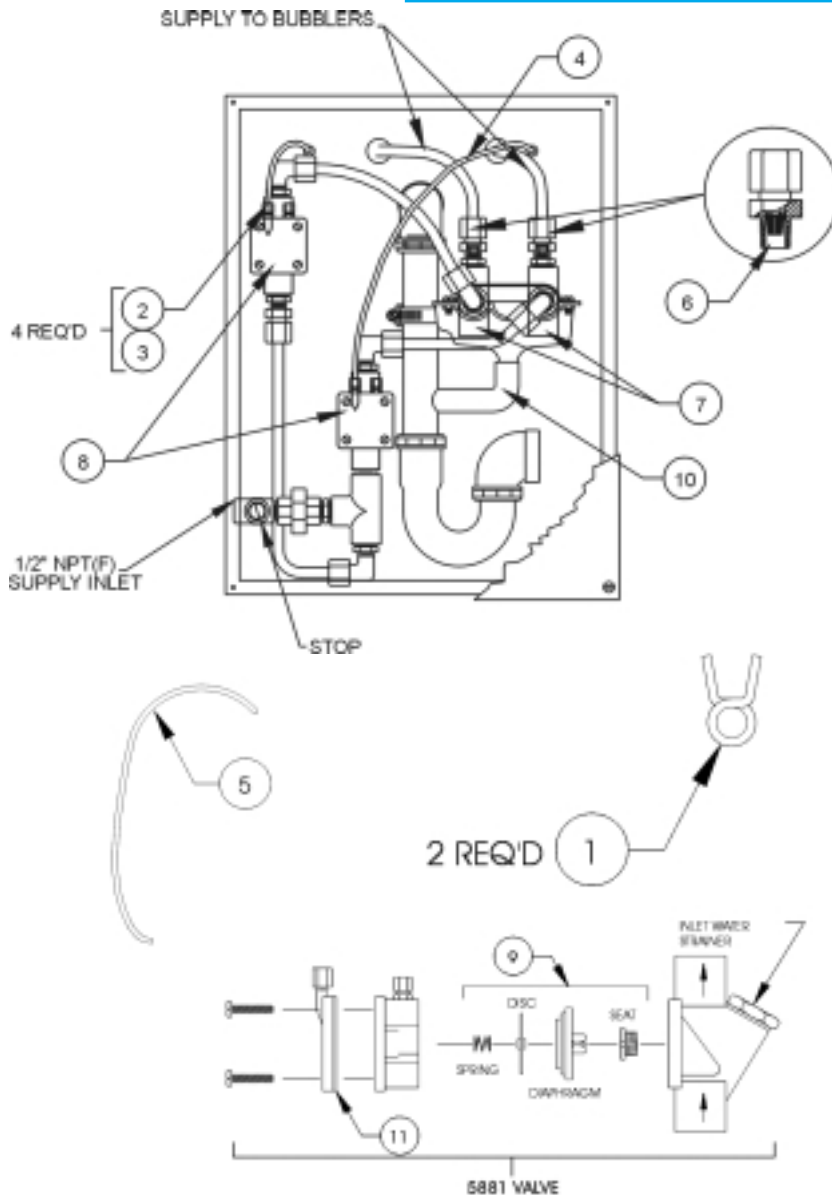
Freeze-resistant valve system with push button activation for use on all Haws two bubbler wall mounted drinking fountains. Fully engineered system with two pneumatic operated valves installed on the inside wall where temperature does not drop below 50° F. When valve goes to off position, water left in supply line between valve and bubbler drains back into waste inside cabinet. Allows fountain on outside to function year-round. Automatic stream regulation with .4 GPM flow control assembly. Included in cabinet is 1/2" NPT screwdriver stop and 1 1/4" NPT trap. Unit is efficient and easy to maintain. This valve exceeds the standards of the Safe Drinking Water Act and Lead Contamination Control Act. All components in the waterway contain less than 0.1% lead.

Servicing Instructions for Model 6522FR:

For fountains with no flow or continuous flow see the servicing instructions for the 5881 valve on page 27.

For fountains with insufficient bubbler flow or varied height of bubbler flow, see the servicing instructions for the 6518FR valve on page 39.

For fountains where water is leaking from the valve box in the wall, or if the fountain line from the valve box to the bubbler is blocked with ice, see the servicing instructions for the 6521FR valve on page 41.



| Repl. Part # | Item # | Description |
|--------------|--------|--|
| VRKFR2P | 1 | Clamp (4 req'd) |
| | 2 | Connector (4 req'd) |
| | 3 | Clamp Nut (4 req'd) |
| | 4 | Tubing 5/32" x 480", Vent, Push Button |
| | 5 | Tubing 3/8" x 260", Supply, Bubbler |
| 6382 | 6 | Flow Control (2 req'd) |
| 0002061720 | 7 | Drain Valve (2 req'd) |
| 5881 | 8 | Valve Assembly (2 req'd) |
| VRK2AV | 9 | Valve Repair Kit for 5881 |
| 0005760312.2 | 10 | Drain Waste Assembly |
| VRK3AV | 11 | Cover Repair Kit for 5881 |

LEAD FREE



Certified to NSF-61 Section 9