

# Component Parts Index



Model No.	Bubbler Head	Valve	Push Button Assembly	In-Line Strainer	Flow Control	Waste Strainer	Plate
1000 Before 1997	5705HPB	5872	PBA1HPB	6420		6463HPB	0004405005
1000, MS, 1998 on	5705HPB	5872	PBA2HPB	6420		6463HPB	PBM1000
1001, MS	5705	5872	PBA2	6420		6463	PBM1000
1001HPS, HPSMS	5705	5872	PBA2	6420		6463PCP	PBM1000
1001FR	5705FR	6521FR	5881PBA		6381	6463	PBM1000
1005	5705	5872	PBA1	6420		6463	0004405005
1005FR	5705FR	6521FR	5881PBA		6381	6463	0004405005
1010, MS	5705HPB	5872	PBA2HPB	6420		6463HPB	PBM1000
1011, MS	5705	5872	PBA2	6420		6463	PBM1000
1011HPS, HPSMS	5705	5872	PBA2	6420		6463PCP	PBM1000
1025, G	5703M	5872	PBA4	6420		6466	0004521563
1035, SS	5703M	5872	PBA4	6420		6452	PBM1035
1035FR, SSFR	5703M	6521FR	5881PBA		6381	6452	PBM1035
1047	5703M	5872	PBA5	6420		6466	PBM1047
1075	5703M	5872	PBA5	6420		6454	PBM1075
1105	5703M	5872	PBA2	6420		6462	PBM1105
1106	5703M	5872	PBA2	6420		6462	0004405028.1
1107	5703M	5872	PBA2	6420		6462	VP9
1107FR	5703M	6521FR	5881PBA		6381	6462	VP9
1108	5703M	5872	PBA2	6420		6462	*1106/1118
1109 Before 6/98	5010					6462	VP9
1109 After 6/98	5703M	5872	PBA2	6420		6462	PBM1109
1109FR	5703M	6521FR	5881FR		6381	6462	PBM1109
1114	5705	5872	PBA1	6420		6463	0004405005
1114MGF	5705HPB	5872	PBA1HPB	6420		6463HPB	0004405005
1114HPS	5705	5872	PBA1	6420		6463PCP	0004405005
1116	5705F	5872	PBA2	6420		6463	PBM1000
1117	5705F	5872	PBA1	6420		6463PCP	0004405005
1118	5703M	5872	PBA2	6420		6462	0004405039.1
1119	5703M	5872	PBA2	6420		6462	PBM1105 PBM1109
1119FR	5703M	6521FR	5881PBA		6381	6462	PBM1105 PBM1109
1121	5701SL	5830LF				6450	
1152	5010					6450	
1201	5703M	5872	PBA5	6420		6454	
1205	5703M	5872	PBA5	6420		6454	0004454181

\*Refer to fountain model for part number

## Plate directory:

PA = Plate, access

PBM = Plate, bottom (under arm extension)

PAB = Plate, access for bib (5 x 6, no hole)

VP = Vandal resistant plate

# Component Parts Index



Model No.	Bubbler Head	Valve	Push Button Assembly	In-Line Strainer	Flow Control	Waste Strainer	Plate
1310	5703M	5872	PBA4	6420		6454	PBM1310
1400	5703M	5872	PBA5	6420		6454	
1405	5703M	5872	PBA4	6420		6454	
1406	5703M	5872	PBA4	6420		6454	
1408	5703M	5872	PBA4	6420		6454	0004465500
1408FR	5703M	6523FR	5881PBA		6382	6454	0004465500
1425	5703M	5872	PBA4	6420		6454	
1430	5703M	5872	PBA4	6420		6454	VP17
1435	5703M	5872	PBA4	6420		6454	VP18
1441	5703M	5872	PBA4	6420		6454	PBM1441
1441FR	5703M	6522FR	5881PBA		6382	6454	PBM1441
2205	5703M	5872	PBA5	6420		6454	
2208	5703M	5872HF	PBA5	6420		6454	
2400	5705	5872	PBA2	6420		6454	
2401		5872HF	PBA2	6420		6454	
2403	5705	5872HF	PBA2	6420		6454	
2405	5705	5872	PBA2	6420		6454	
2406	5705	5872HF	PBA2	6420		6454	
3060	5701SL	5872	PBA4	6420		6461	PAB3000
3060FR	5701SL	6518FR	5881PBA		6388	6461	PAB3000
3121	5703M	5872	PBA5	6420		6466	PAB3000, 0004402004
3121FR	5703M	6518FR	5881PBA		6388	6466	PAB3000, 0004402004
3150	5703M	5872	PBA5	6420		6466	PAB3000, PBM1047, 0004402004
3150FR	5703M	6518.2FR	5881PBA		6388	6466	PAB3000, PBM1047, 0004402004
3176	5701SL	5872	PBA5	6420		6461	**PA3177
3176FR	5701SL	6518FR	5881PBA		6388	6461	**PA3177
3177	5703M	5872	PBA5	6420		6466	PBM3177, PA3177, PAB3000
3177FR	5703M	6518FR	5881FR		6388	6466	PBM3177, PA3177, PAB3000
3202, G	5703M	5872	PBA4	6420			
3300, G	5703M	5872	PBA4	6420		6466	0004521563
3300FR, GFR	5703M	6518.2FR	5881PBA		6388	6466	0004521563
3376	5705	5872	PBA1	6420		6463	0004405005

\*\*Only PA3177 is available, the bottom plate under the bowl is no longer available

### Plate directory:

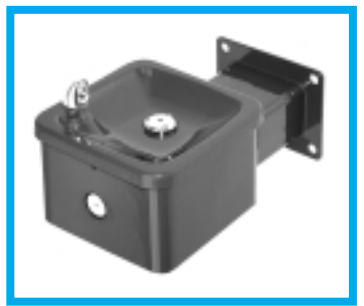
PA = Plate, access

PBM = Plate, bottom (under arm extension)

PAB = Plate, access for bib (5 x 6, no hole)

VP = Vandal resistant plate

# Component Parts Index



Model No.	Bubbler Head	Valve	Push Button Assembly	In-Line Strainer	Flow Control	Waste Strainer	Plate
3376FR	5705FR	6518FR	5881PBA		6388	6463	0004405005
3377, G	5705	5872	PBA2	6420		6463	PBM1000
3377FR, GFR	5705FR	6518FR	5881PBA		6388	6463	PBM1000
3380	5705	5872	PBA2	6420		6463	Top: 0004521586 Btm: 0004521581
3380FR	5705	6518FR	5881PBA		6388	6463	Top: 0004521586 Btm: 0004521581
3410	5703M	5872	PBA4	6420		6460	
3410FR	5703M	6518FR	5881PBA		6388	6460	
3482	5701SL	5830LF				6450	
3500, SS	5703M	5872	PBA4	6420		6452	PBM1035
3500FR, SSFR	5703M		5881PBA		CALL	6452	PBM1035
3501, SS	5703M	5872	PBA4	6420		6452	
3501FR, SSFR	5703M		5881PBA		CALL	6452	
3502, SS	5703M	5872	PBA4	6420		6452	PBM1035
3503, SS	5703M	5872	PBA4	6420		6452	PBM1035
3503FR, SSFR	5703M		5881PBA		CALL	6452	PBM1035
4003	5010					6463	
4004PB	5705	5872	PBA5	6420		6463	

**Plate directory:**

PA = Plate, access

PBM = Plate, bottom (under arm extension)

PAB = Plate, access for bib (5 x 6, no hole)

VP = Vandal resistant plate